



## Websense Enterprise® Blue Coat™ Systems Edition

Websense Enterprise®, the world's leading Employee Internet Management (EIM) solution, defends organizations and employees using the Internet against new and emerging threats such as spyware and malicious mobile code (MMC). Websense Enterprise enhances security, improves employee productivity, reduces legal liability, and optimizes the use of IT resources. Websense Enterprise integrates seamlessly with the leading network infrastructure products and offers unequaled flexibility and control...

### GROWING RISKS AND PRODUCTIVITY CHALLENGES

Every organization with a connection to the Internet has faced the problem of users accessing inappropriate material on the web. To that problem have been added those of harmful applications downloaded from websites, spyware, the use of instant messaging (IM) and peer-to-peer (P2P) applications, and more. The result has been a dramatic increase in the costs and risks of maintaining an unmonitored network.

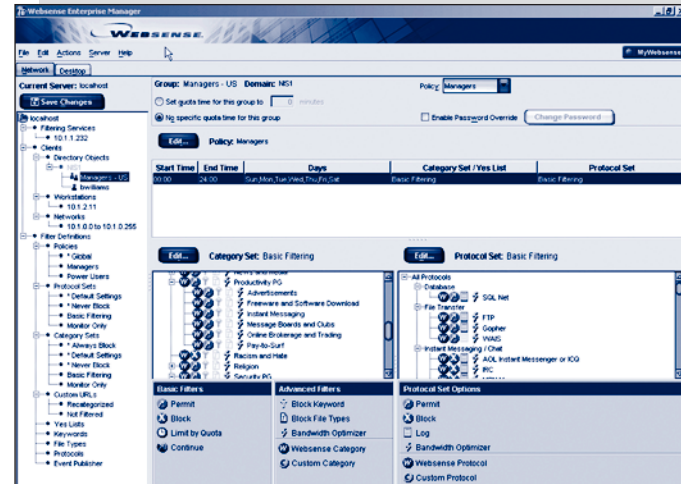
### Websense Enterprise integrated with Blue Coat ProxySG™ appliances

Websense has teamed up with Blue Coat Systems to integrate Websense Enterprise software with Blue Coat's Internet access and security solutions. This direct integration of Websense Enterprise and Blue Coat ProxySG family of appliances allows organizations to detect and manage employee access to the Internet to improve network security by managing employee access to network applications and protocols such as spyware, P2P networks, IM, and streaming media. The combined Websense and Blue Coat solution significantly reduces security risks and legal liability while improving employee productivity and conserving network bandwidth.

### Websense Enterprise Capabilities

Websense Enterprise is the leading Employee Internet Management (EIM) solution, combining powerful flexibility with rich functionality:

- Provides comprehensive and accurate Internet filtering supported by a database of URLs that is updated daily.
- Manages employee access to network applications and protocols such as P2P networks, IM and streaming media.
- Balances work-related and personal surfing by enabling IT administrators to easily set custom policies to manage employee use of the Internet and network applications use.
- Minimizes administrative overhead with easy-to-use centralized management of employee computing policies using Websense Enterprise Manager.



Websense Enterprise enables customized policies for different users and groups.

### Websense Enterprise advantages

#### Largest, most accurate filtering database

#### Industry-leading analysis and reporting tools

- Websense Enterprise Explorer - Provides quick and easy access to employee activity statistics
- Websense Enterprise Real-time Analyzer™ - Analyzes current and recent network traffic
- Websense Enterprise Reporter - Offers over 80 predefined report templates

#### Enhanced Internet filtering options

- Websense Enterprise Security PG™ - Strengthens security by blocking access to phishing, spyware sites, and websites infected with malicious mobile code.
- Websense Enterprise Productivity PG™ - Increases employee productivity by controlling access to many of the most popular cyberslacking categories.
- Websense Enterprise Bandwidth PG™ - Improves network performance by managing access to bandwidth-intensive sites.

#### Network management and bandwidth optimization

- Websense Enterprise Bandwidth Optimizer™ - Improves bandwidth utilization and network performance.
- Websense Enterprise IM Attachment Manager™ - Minimizes security threats due to viruses and worms by blocking IM file attachments.

- Detects productivity losses arising from employee Internet and application use and proactively responds to these problems with updated policy enforcement.
- Provides report templates, block pages, and web page category names in ten languages: Chinese (simplified and traditional), English, French, German, Italian, Japanese, Korean, Portuguese and Spanish

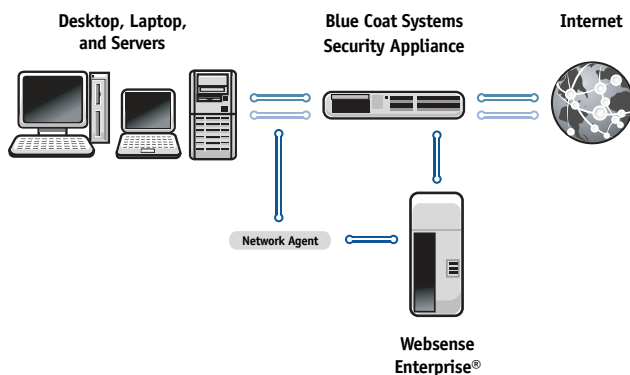
## Deploying Websense Enterprise across Blue Coat ProxySG appliances

Websense Enterprise is the only Employee Internet Management solution available in both integrated and embedded configuration with Blue Coat ProxySG appliance. The breadth and depth of Websense's deployment options ensures ease of installation and maintenance while maximizing scalability, performance and feature support. Websense Enterprise integrated with Blue Coat security appliances can be deployed in two ways, depending upon your network requirements: in an integrated or embedded configuration.

### Integrated deployment

Websense Enterprise integrated with Blue Coat ProxySG appliance enables seamless deployment of filtering functionality with a customer's existing network infrastructure. The combined solution delivers "pass-through" filtering by leveraging the packet-capturing capabilities of Blue Coat ProxySG appliances. Integrated deployment offers the following key benefits to customers:

- **Maximum scalability** - Websense Enterprise leverages the packet-capturing capabilities of Blue Coat's custom operating system by allowing an organization to scale reliably as network loads and transaction volume increases.
- **Superior stability** - Integrated deployment eliminates the possibility of a single point of failure, as network and gateway resources can function independently.



### Embedded deployment

Websense Enterprise embedded with Blue Coat Systems family of ProxySG appliances enables on-box integration. Embedded deployment offers the following key benefits:

- **Lower hardware expense** - Websense Enterprise embedded in Blue Coat secure proxy appliances decreases the total cost of ownership of the Internet filtering solution by reducing the number of separate hardware components.
- **Decreased network latency** - Websense Enterprise embedded with Blue Coat secure proxy appliances minimizes network latency and provides improved filtering performance by combining multiple functions onto one platform.



## Blue Coat ProxySG appliances

The Blue Coat family of secure proxy appliances is based on a custom operating system environment, SGOS, which incorporates Blue Coat's powerful Policy Processing Engine™ - a patent-pending framework for applying content, application and user policies for any environment.

### Blue Coat system requirements

#### Blue Coat Systems ProxySG appliances (integrated):

- Blue Coat Systems Security appliances with SGOS 2.103 or CacheOS 3.5 or greater

#### Blue Coat Systems ProxySG appliances (embedded):

- Blue Coat Systems ProxySG family of appliances running SGOS 3.0 or greater

### Websense Enterprise system requirements

#### Hardware:

- Pentium III or Sun Ultra 10 processor or greater with at least 512 MB RAM. Hardware requirements will vary by configuration. Please see deployment guide for additional information.

#### Supported Operating Systems:

- Microsoft® Windows® 2003 Server, Windows® 2000 Server (SP3 or greater)
- Red Hat Linux™ 9 or Red Hat Enterprise Linux™ 3
- Sun Solaris™ 8-9

To learn more about Websense and Blue Coat Systems integrations please visit <http://www.websense.com/products/about/integrations>

To learn more about Blue Coat Systems products please visit <http://www.bluecoat.com>

Download a free, fully-functional 30-day evaluation at [www.websense.com/downloads](http://www.websense.com/downloads) today!

**Websense Inc.**  
San Diego, CA USA  
tel 800.723.1166  
tel 858.320.8000  
[www.websense.com](http://www.websense.com)

**Websense UK**  
Chertsey, England  
tel +44 (0)1932. 796001  
[www.websense.co.uk](http://www.websense.co.uk)

**Websense France**  
Paris, France  
tel +33 (0)15660. 5814  
[www.websense.fr](http://www.websense.fr)

**Websense Germany**  
Munich, Germany  
tel +49 (0)89 24445. 4005  
[www.websense.de](http://www.websense.de)

**Websense Japan**  
Tokyo, Japan  
tel +813.5322.1335  
[www.websense.co.jp](http://www.websense.co.jp)

**Websense Australia**  
Sydney, Australia  
tel +61 2 9006. 1621  
[www.websense.com.au](http://www.websense.com.au)

**Websense Greater China**  
Hong Kong  
tel +852.2855.8811  
[www.chinese.websense.com](http://www.chinese.websense.com)  
[www.prc.websense.com](http://www.prc.websense.com)

**Websense Latin America**  
Sao Paulo, Brazil  
tel +55.11.4612.0798  
[www.espanol.websense.com](http://www.espanol.websense.com)  
[www.portugues.websense.com](http://www.portugues.websense.com)