



## Websense Enterprise® Check Point™ Firewall-1 Edition

Websense Enterprise®, the world's leading Employee Internet Management (EIM) solution, defends organizations and employees using the Internet against new and emerging threats such as spyware and malicious mobile code (MMC). Websense Enterprise enhances security, improves employee productivity, reduces legal liability, and optimizes the use of IT resources. Websense Enterprise integrates seamlessly with the leading network infrastructure products and offers unequaled flexibility and control...

### GROWING RISKS AND PRODUCTIVITY CHALLENGES

Every organization with a connection to the Internet has faced the problem of users accessing inappropriate material on the web. To that problem have been added those of harmful applications downloaded from websites, spyware, the use of instant messaging (IM) and peer-to-peer (P2P) applications, and more. The result has been a dramatic increase in the costs and risks of maintaining an unmonitored network.

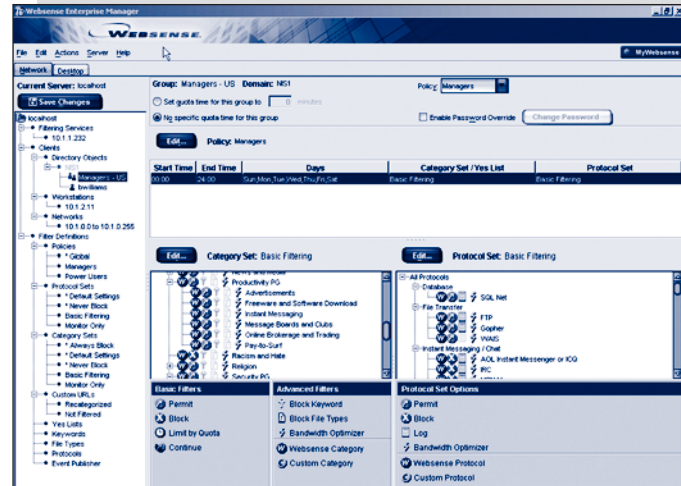
### Websense Enterprise integrated with Check Point FireWall-1 software

Websense has teamed up with Check Point to integrate OPSEC certified Websense Enterprise software with Check Point's VPN and firewall products. This direct integration of Websense Enterprise and Check Point FireWall-1 software allows organizations to analyze, manage, and report on employee access to the Internet and to improve network security by managing employee access to network applications and protocols such as spyware, P2P networks, IM, and streaming media. Together, Websense and Check Point significantly reduce security risks and legal liability while improving employee productivity and conserving network bandwidth.

### Websense Enterprise Capabilities

Websense Enterprise is the leading Employee Internet Management solution, combining powerful flexibility with rich functionality:

- Provides comprehensive and accurate Internet filtering supported by a database of URLs that is updated daily.
- Manages employee access to network applications and protocols such as P2P networks, IM, and streaming media.
- Balances work-related and personal surfing by enabling IT administrators to easily set custom policies to manage employee use of the Internet and network applications.
- Minimizes administrative overhead with easy-to-use centralized management of employee computing policies using Websense Manager.



Websense Enterprise enables customized policies for different users and groups.

### Websense Enterprise advantages

#### Largest, most accurate filtering database

#### Industry-leading analysis and reporting tools

- Websense Enterprise Explorer - Provides quick and easy access to employee activity statistics
- Websense Enterprise Real-time Analyzer™ - Analyzes current and recent network traffic
- Websense Enterprise Reporter - Offers over 80 predefined report templates

#### Enhanced Internet filtering options

- Websense Enterprise Security PG™ - Strengthens security by blocking access to phishing, spyware sites, and websites infected with malicious mobile code.
- Websense Enterprise Productivity PG™ - Increases employee productivity by controlling access to many of the most popular cyberslacking categories.
- Websense Enterprise Bandwidth PG™ - Improves network performance by managing access to bandwidth-intensive sites.

#### Network management and bandwidth optimization

- Websense Enterprise Bandwidth Optimizer™ - Improves bandwidth utilization and network performance.
- Websense Enterprise IM Attachment Manager™ - Minimizes security threats due to viruses and worms by blocking IM file attachments.



- Detects productivity losses and security risks arising from employee Internet and application use and proactively responds to these problems with updated policy enforcement.
- Provides report templates, block pages, and web page category names in ten languages: Chinese (simplified and traditional), English, French, German, Italian, Japanese, Korean, Portuguese and Spanish.

## WebSense Enterprise, the integrated Employee Internet Management (EIM) solution

WebSense Enterprise integrated with Check Point FireWall-1 enables seamless deployment of filtering functionality with your existing firewall infrastructure. Tight integration with Check Point FireWall-1 delivers "pass-through" filtering by leveraging the packet-capturing capabilities of the firewall. Integrated deployment offers the following key benefits:

- **Full functionality** - WebSense Enterprise offers the full capabilities of a comprehensive web filtering solution
- **Maximum scalability** - WebSense Enterprise leverages the packet capturing capabilities of Check Point FireWall-1 by allowing organizations to scale reliably as network loads and transaction volume increases.
- **Superior stability** - Integrated deployment eliminates the possibility of a single point of failure, as network and firewall resources can function independently.
- **Strong partnership between market leaders** - Partnership between market leaders WebSense and Check Point will continue to deliver leading edge employee computing management and security solutions, which allow customers to be a step ahead of emerging security threats.

## Check Point FireWall-1

Check Point FireWall-1 delivers comprehensive and highly scalable attack protection and network security. Using INSPECT, the most adaptive and intelligent inspection technology, FireWall-1 integrates both network-level and application-level protection to provide the highest level of security, with access control, attack defenses, content security, authentication, and integrated Network Address Translation (NAT). FireWall-1 is integrated into the VPN-1 family of products and managed by Check Point's leading SMART management architecture.

## Check Point system requirements

### Check Point FireWall-1:

- FireWall-1 4.1 SP3 or greater
- FireWall-1 NG Feature Pack 1 or greater
- FireWall-1 NG with Hotfix 1 or Hotfix 2
- FireWall-1 NG AI
- FireWall-1 NGX

## WebSense Enterprise system requirements

### Hardware:

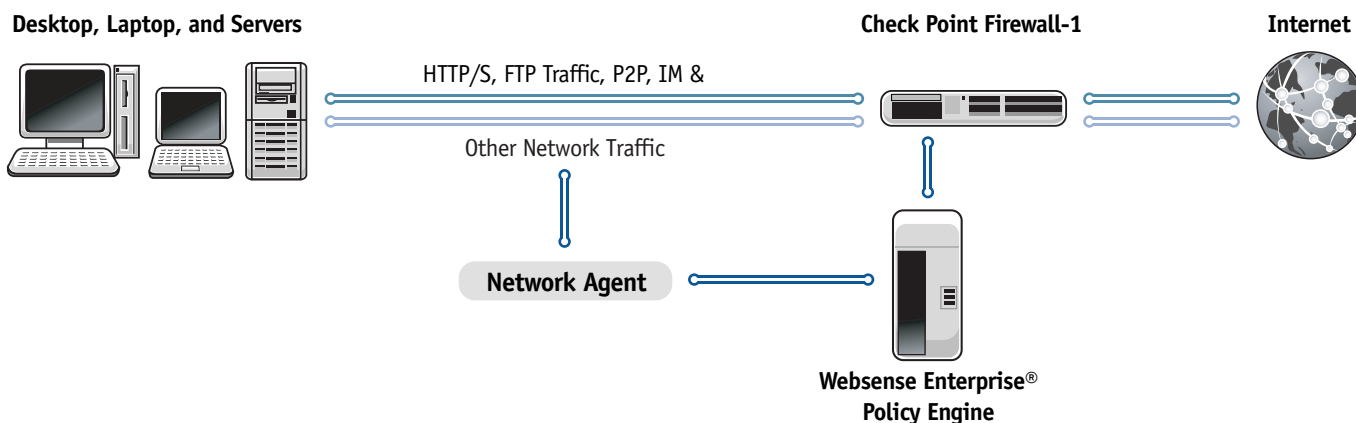
- Pentium III or Sun Ultra 10 processor or greater with at least 512 MB RAM. Hardware requirements will vary by configuration. Please see deployment guide for additional information.

### Supported Operating Systems:

- Microsoft® Windows® 2003 Server, Windows® 2000 Server (SP3 or greater)
- Red Hat Linux™ 9 or Red Hat Enterprise Linux™ 3
- Sun Solaris™ 8-9

To learn more about WebSense and Check Point integrations please visit <http://www.websense.com/checkpoint>

To learn more about Check Point products please visit <http://www.checkpoint.com>



Download a free, fully-functional 30-day evaluation at [www.websense.com/downloads](http://www.websense.com/downloads) today!

**WebSense Inc.**  
San Diego, CA USA  
tel 800.723.1166  
tel 858.320.8000  
[www.websense.com](http://www.websense.com)

**WebSense UK**  
Chertsey, England  
tel +44 (0)1932. 796001  
[www.websense.co.uk](http://www.websense.co.uk)

**WebSense France**  
Paris, France  
tel +33 (0)15660. 5814  
[www.websense.fr](http://www.websense.fr)

**WebSense Germany**  
Munich, Germany  
tel +49 (0)89 24445. 4005  
[www.websense.de](http://www.websense.de)

**WebSense Japan**  
Tokyo, Japan  
tel +813.5322.1335  
[www.websense.co.jp](http://www.websense.co.jp)

**WebSense Australia**  
Sydney, Australia  
tel +61 2 9006. 1621  
[www.websense.com.au](http://www.websense.com.au)

**WebSense Greater China**  
Hong Kong  
tel +852.2855.8811  
[www.chinese.websense.com](http://www.chinese.websense.com)  
[www.prc.websense.com](http://www.prc.websense.com)

**WebSense Latin America**  
Sao Paulo, Brazil  
tel +55.11.4612.0798  
[www.espanol.websense.com](http://www.espanol.websense.com)  
[www.portugues.websense.com](http://www.portugues.websense.com)