



Websense Real-Time Security Updates

Websense® Real-Time Security Updates allow organizations to obtain immediate protection from new security threats. With Real-Time Security Updates, Websense® Security Premium Group™ (PG) and Websense® Client Policy Manager™ (CPM) are updated as soon as new security threats are recognized, automatically managing web-based and application-based threats immediately.

As security threats become more complex and destructive, it is imperative to protect your organization and network as quickly as possible. However, current security solutions often take time to develop an antidote to a security issue and require technical expertise to implement. Websense Real-Time Security Updates close the window of exposure to security threats by automatically addressing these threats via database updates, without manual administrative interaction required.

The Danger of the Window of Exposure

Malicious mobile code, trojan horses, worms and other security threats are appearing with increasing frequency and can cost organizations significant amounts of money and lost productivity if not countered in a timely manner:

- Over \$141 million was lost by US organizations in the last year due to cyber-security breaches (*CSI/FBI 2004 Computer Crime and Security Survey, June 2004*).
- Over the first six months of 2004, there were over four and a half times the number of viruses and worms as the same period in 2003 (*Symantec Internet Security Threat Report, October 2004*).
- 1 in 3 companies have detected spyware on their network (*Websense UK Survey, February 2003*).

Closing the Window of Exposure with Websense Real-Time Security Updates

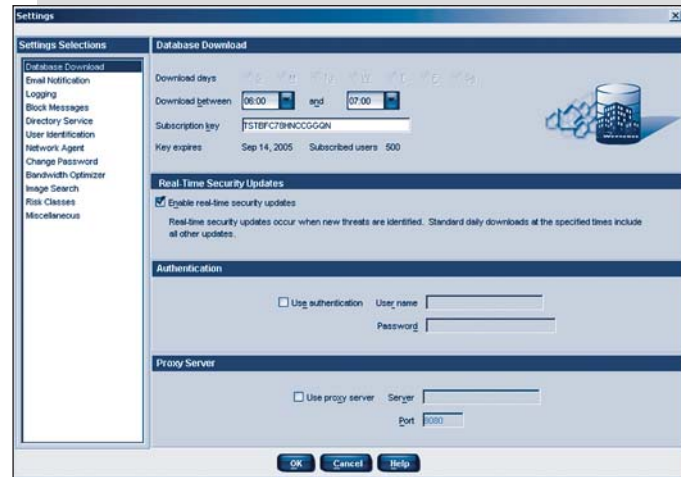
Websense Real-Time Security Updates provide an essential service to drastically reduce the window of exposure to new threats.

Real-Time Security Updates enable organizations to:

- Receive immediate database updates for web-based and application-based threats minutes after detection by Websense.
- Achieve automatic protection from updates - no intervention or administrative interaction required.
- Dramatically lower your organization's risk, save time and increase productivity by identifying and managing security threats hours before other traditional security solutions are updated.

Real-Time Security Updates minimize an organization's reaction time to urgent security threats, thereby reducing risk, and saving time and money. Benefits include:

- Website-level real-time security - When Websense detects that trusted websites have become infected with malicious mobile code or other threats, Security PG and Real-Time Security Updates will automatically block access to the site within minutes.
- Application-level real-time security - When a new trojan horse, worm, or other application threat is identified, CPM and Real-Time Security Updates quickly deny execution of the malicious application across desktops and laptops.
- Automatic threat updates - Upon identification of the threat by Websense, the local database is updated within minutes without requiring any manual action or deployment.
- Simple deployment - Once subscribed, administrators can activate the service with a single selection. No additional software (beyond Security PG or CPM) is required.



A simple check-box enables Real-Time Security Updates.